

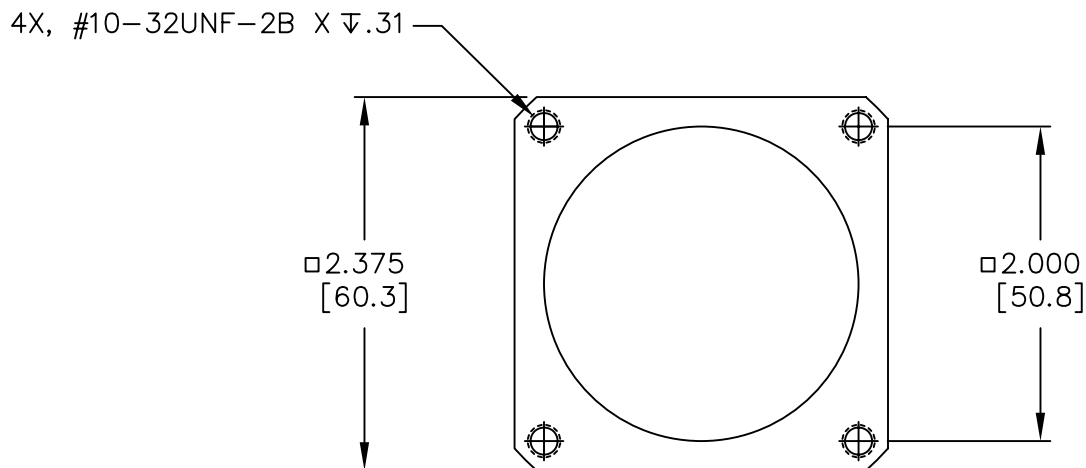
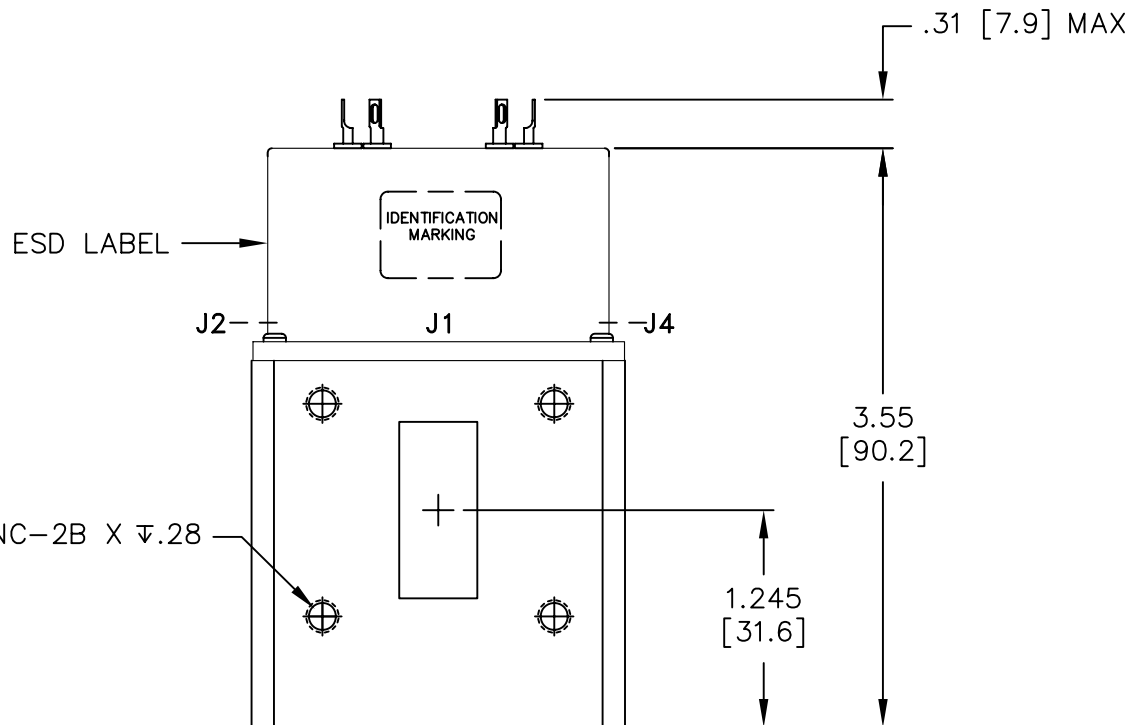
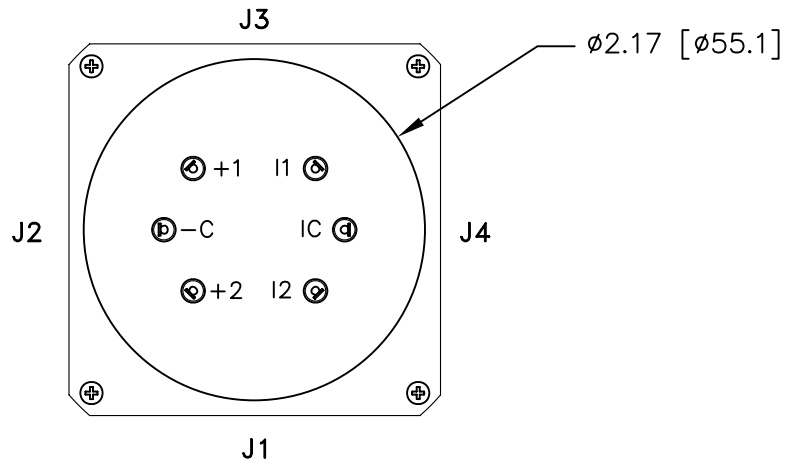


REVISIONS			
REV.	DESCRIPTION	DATE	APPROVED
A	PRODUCTION RELEASE	6/12/08	K.R.
B	REVISED PER ECO #10109	5/16/11	K.R.

Nominal Coil Voltage	Part Number	Flange Type
28 Vdc	WR112T1-4321	COVER FLANGE
28 Vdc	WR112T2-4321	CHOKE FLANGE

REVISIONS	B	B	B				 DowKey® Microwave CORPORATION	4822 McGrath Street Ventura, CA. 93003-5641 PH: (805) 650-0260 FAX: (805) 650-1734		
SHEET NO.	1	2	3							
APPROVALS			DATE							
DRAWN S. LEE			6/11/08							
ENG G. NICKLAUS			6/11/08				WR112 WAVEGUIDE SWITCH, TRANSFER, LATCHING SELF CUT-OFF, 28 VDC -COMMON, INDICATORS			
ENG. MGR. R. SZNUK			6/12/08							
SALES MGR. J. TRUJILLO			6/12/08				CODE IDENT. NO.		DWG. NO.	
Q.A. MGR. R. MATSUMOTO			6/12/08				00471		WR112TX-4321	
MFG. MGR. R. GONZALEZ			6/12/08				SCALE NONE		FINAL ASSY:	
									SHEET 1 OF 3	

OUTLINE DRAWING:



[] MILLIMETERS

UNLESS OTHERWISE SPECIFIED TOLERANCES ARE:
 .XXX $\pm .010$ ANGLES: $\pm 3^\circ$
 .XX $\pm .030$

CODE IDENT. NO.
00471

DWG. NO.
WR112TX-4321

REV.
B

SCALE NONE

SHEET 2 OF 3

SPECIFICATIONS:

1. RF CHARACTERISTICS:

1.1 FREQUENCY (GHz):	7.05–10.00
1.2 VSWR (RATIO MAX):	1.10:1
1.3 INSERTION LOSS (dB MAX):	0.10
1.4 ISOLATION (dB MIN):	60

2. ACTUATION DATA:

2.1 OPERATING VOLTAGE:	24–30 Vdc (28Vdc NOMINAL)
2.2 OPERATING CURRENT:	.35A MAX @ 28Vdc & 20°C
2.3 SWITCHING TIME:	200ms MAX
2.4 OPERATING MODE:	LATCHING SELF CUT-OFF

3. MECHANICAL:

3.1 WEIGHT:	500g MAX
3.2 DESIGN LIFE:	200,000 CYCLES

4. ENVIRONMENTAL:

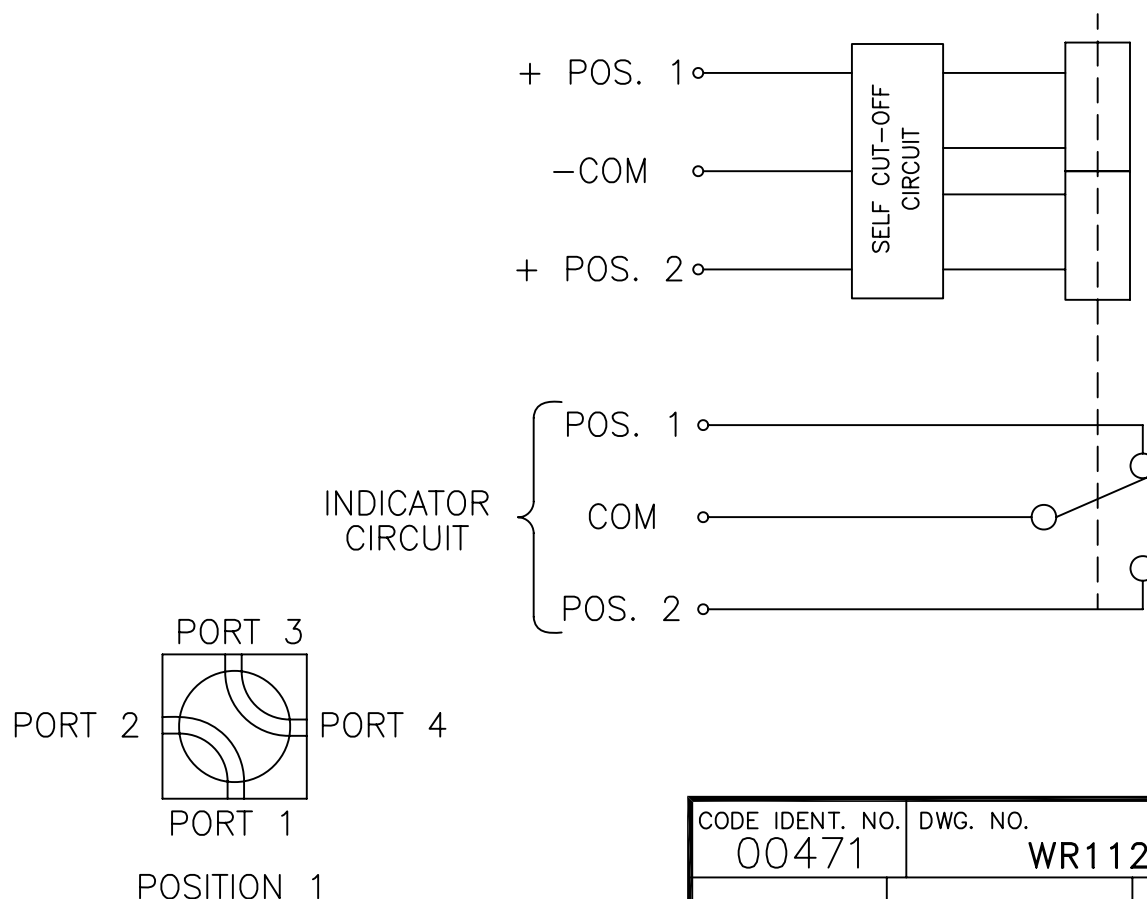
4.1 OPERATING TEMPERATURE:	–54°C TO +85°C
4.2 STORAGE TEMPERATURE:	–54°C TO +85°C

5. MATERIALS AND FINISHES:

5.1 RF WAVEGUIDE HOUSING:	ALUMINUM, CHEM FILM
5.2 ACTUATOR HOUSING:	ALUMINUM, ELECTROLESS NICKEL

SCHEMATIC:

SCHEMATIC DIAGRAM (SHOWN IN POS 1)



CODE IDENT. NO. 00471	DWG. NO. WR112TX-4321	REV. B
SCALE NONE		SHEET 3 OF 3