
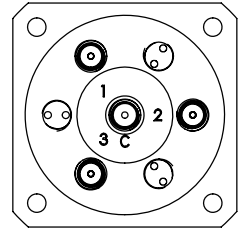
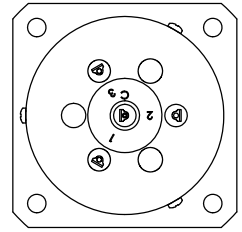
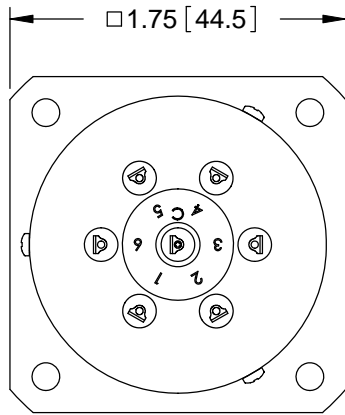


REVISIONS			
REV.	DESCRIPTION	DATE	APPROVED
B	REVISED PER ECO 5374	11/02/98	J.A.
C	REVISED AND REDRAWN PER ECO 11022	12/2/14	K.R.

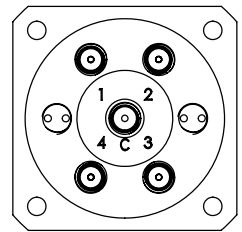
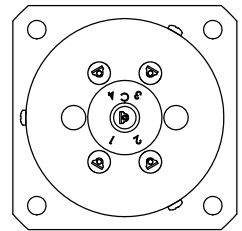
Nominal Coil Voltage	Part Number		
	SP3T	SP4T	SP6T
12 Vdc	535-5208	545-5208	565-5208
15 Vdc	535-5908	545-5908	565-5908
24 Vdc	535-5808	545-5808	565-5808
28 Vdc	535-5308	545-5308	565-5308

REVISIONS	C	C	C				 <b>DowKey<sup>®</sup> Microwave</b> CORPORATION <small>A DOVER TECHNOLOGIES COMPANY</small>	4822 McGrath Street Ventura, CA. 93003-5641 PH: (805) 650-0260 FAX: (805) 650-1734	
SHEET NO.	1	2	3						
APPROVALS			DATE			<b>SW, 3-6 POSITION SMA-FEMALE CONNECTORS NORMALLY OPEN</b>			
DRAWN SARA LEE			11/20/14						
ENGINEERING T. JOHNSON			12/1/2014						
QUALITY G. WAKEFIELD			12/2/2014						
MANUFACTURING J. LEE			12/2/2014			CODE IDENT. NO. <b>00471</b>	DWG. NO. <b>5X5-5X08</b>	SCALE NONE FINAL ASSY: 565-5308	SHEET 1 OF 3

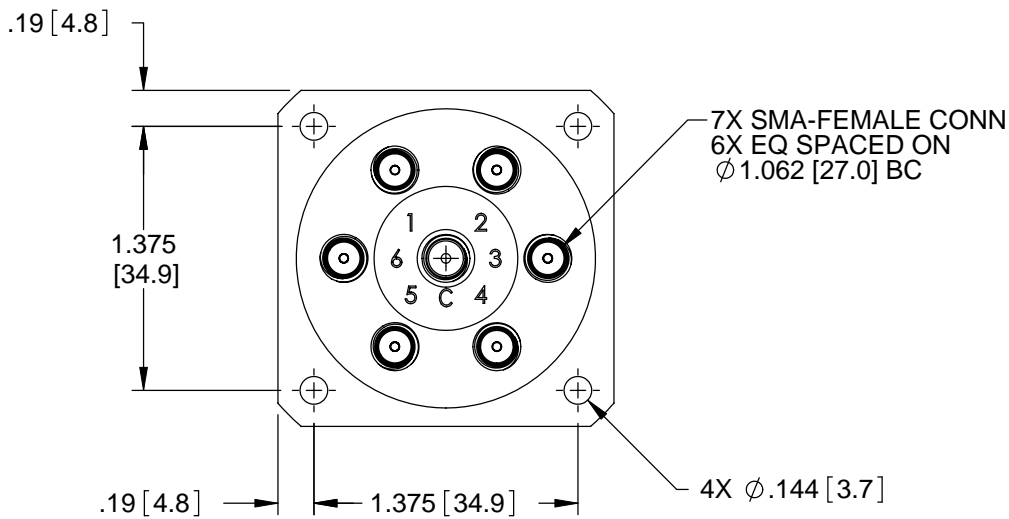
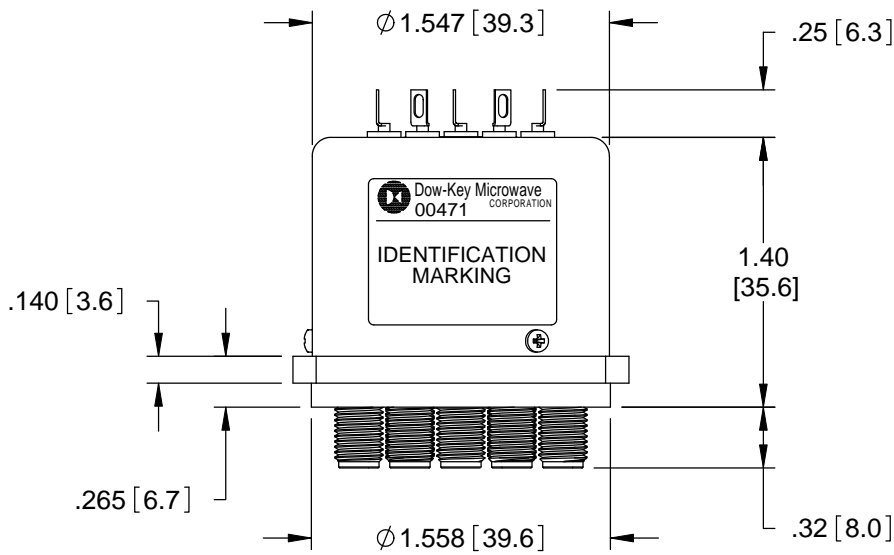
# OUTLINE DRAWING:



**3 POSITION**



**4 POSITION**



[ ] MILLIMETERS

UNLESS OTHERWISE SPECIFIED TOLERANCES ARE: .XXX ±.010 ANGLES: ±3° .XX ±.030	CODE IDENT. NO. <b>00471</b>	DWG. NO. <b>5X5-5X08</b>	REV. <b>C</b>
	SCALE NONE	FINAL ASSY: TBD	SHEET 2 OF 3

# SPECIFICATION:

## 1.0 RF CHARACTERISTICS:

1.1 FREQUENCY (GHz)	DC - 4	4 - 8	8 - 12.4	12.4 - 18
1.2 VSWR (RATIO MAX)	1.20:1	1.30:1	1.40:1	1.50:1
1.3 INSERTION LOSS (dB MAX)	0.20	0.30	0.40	0.50
1.4 ISOLATION (dB MIN)	70	65	65	60
1.5 RF POWER (WATTS CW MAX)	125	90	75	60
1.6 IMPEDANCE (NOMINAL)	50 OHMS			

## 2.0 ACTUATION DATA:

2.1	NOMINAL VOLTAGE	OPERATING VOLTAGE	CURRENT (TYP) @ NOMINAL VOLTAGE & 25°C
	12	11-14	335mA
	15	13-17	280mA
	24	20-28	190mA
	28	24-32	160mA

2.2 SWITCHING TIME 20mS MAX  
 2.3 OPERATING MODE NORMALLY OPEN

## 3.0 MECHANICAL:

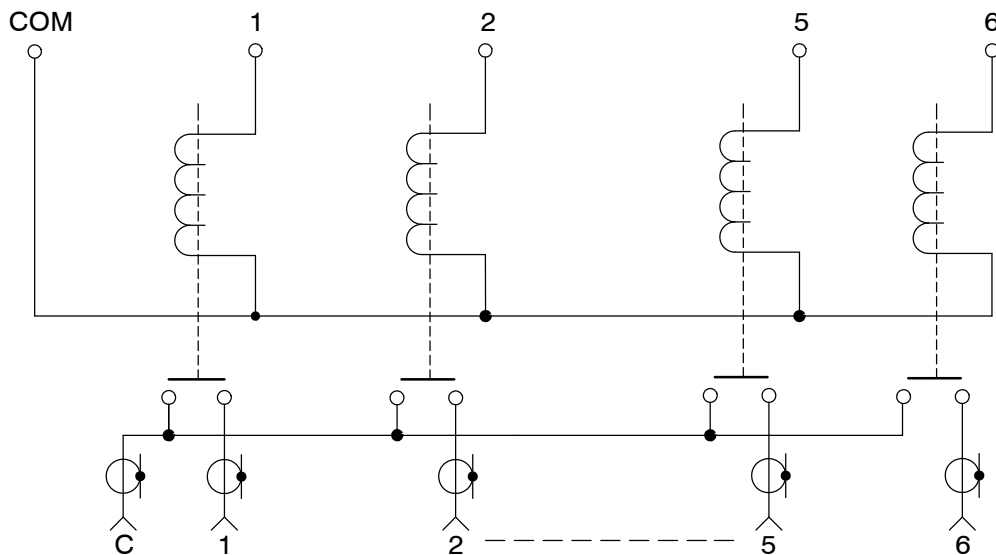
3.1 RF CONTACTS BREAK BEFORE MAKE  
 3.2 WEIGHT 3.8oz (108g) NOMINAL  
 3.3 DESIGN LIFE 2,000,000 CYCLES MINIMUM

## 4.0 ENVIRONMENTAL:

4.1 OPERATING TEMPERATURE -25°C TO +65°C  
 4.2 STORAGE TEMPERATURE -55°C TO +85°C  
 4.3 SEAL: SAND AND DUST

# SCHMATIC:

TERMINALS ARE NOT POLARITY SENSITIVE



SWITCH SHOWN IN THE DE-ENERGIZED POSITION

CODE IDENT. NO. <b>00471</b>	DWG. NO. <b>5X5-5X08</b>	REV. <b>C</b>
SCALE NONE	FINAL ASSY: 565-5308	SHEET 3 OF 3