
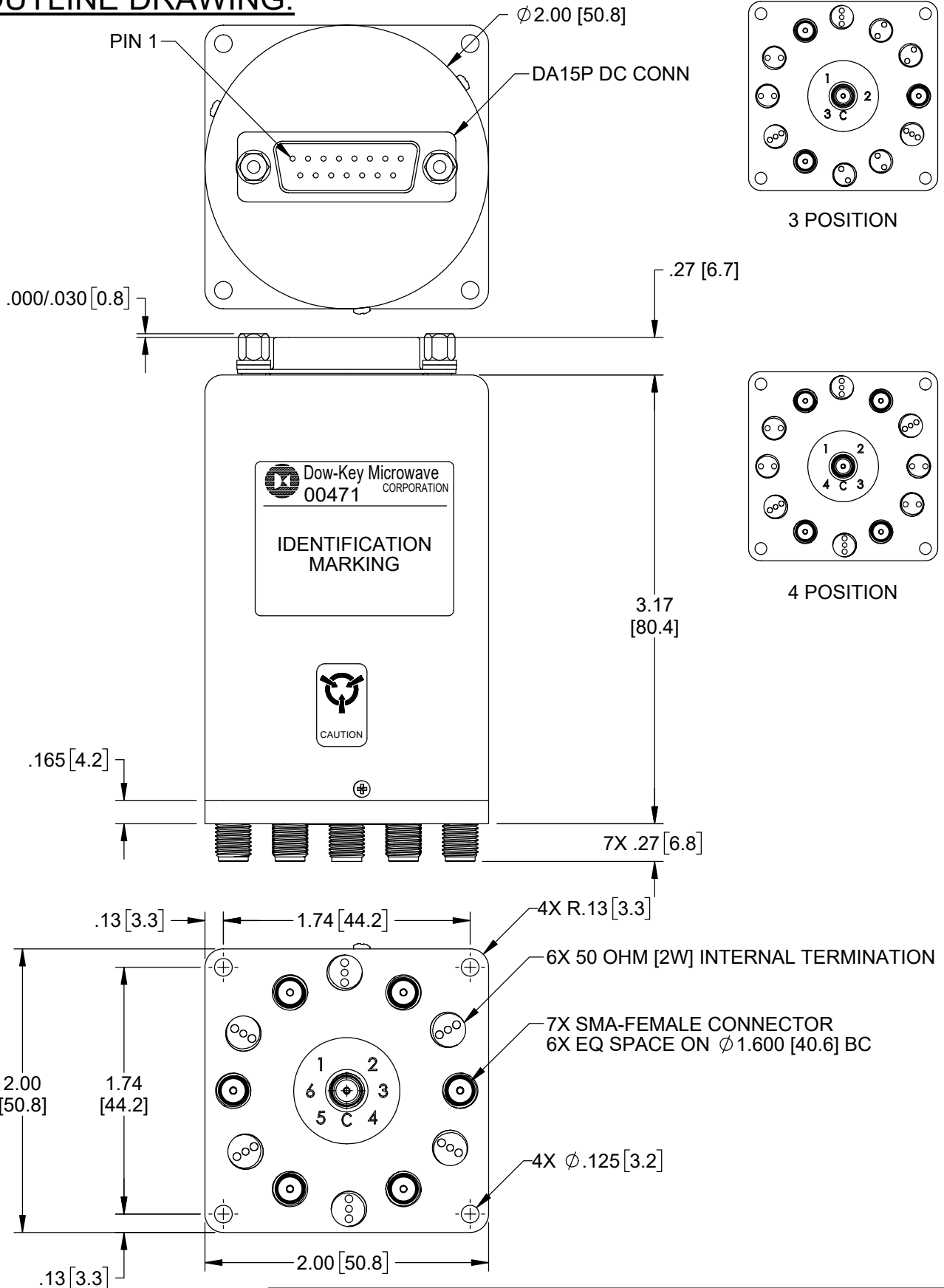


REVISIONS			
REV.	DESCRIPTION	DATE	APPROVED
A	PRODUCTION RELEASE	8/31/09	K.R.
B	REVISED PER ECO 12723	11/18/21	A.Z.

Nominal Coil Voltage	Part Number		
	SP3T	SP4T	SP6T
12 Vdc	431JL-420803A	441JL-420803A	461JL-420803A
15 Vdc	431JL-490803A	441JL-490803A	461JL-490803A
24 Vdc	431JL-480803A	441JL-480803A	461JL-480803A
28 Vdc	431JL-430803A	441JL-430803A	461JL-430803A

APPROVALS	DATE	 DowKey[®] Microwave CORPORATION <small>A DOVER TECHNOLOGIES COMPANY</small>	4822 McGrath Street Ventura, CA. 93003-5641 PH: (805) 650-0260 FAX: (805) 650-1734		
DRAWN SARA LEE	8/31/2009		SWITCH, 3-6 POSITION, LATCHING SELF CUT-OFF SMA-FEMALE CONNECTORS, 5V CONTROL, DA15P 50 OHM [2W] TERMINATIONS, FLANGE MOUNT		
ENGINEERING G. NICKLAUS	11/15/2021				
QUALITY K. PATTERSON	11/16/2021				
MANUFACTURING R. GARCIA	11/16/2021		CODE IDENT. NO. 00471	DWG. NO. 4X1JL-4X0803A	SCALE NONE

OUTLINE DRAWING:



UNLESS OTHERWISE SPECIFIED TOLERANCES ARE: .XXX $\pm .010$ ANGLES: $\pm 3^\circ$.XX $\pm .030$	CODE IDENT. NO.	DWG. NO.	REV.
	00471	4X1JL-4X0803A	B
SCALE NONE	SHEET 2 OF 3		

[] MILLIMETERS

SPECIFICATION:

1.0 RF CHARACTERISTICS:

1.1 FREQUENCY (GHz)	DC - 4	4 - 8	8 - 12.4	12.4 - 18
1.2 VSWR (RATIO MAX)	1.20:1	1.30:1	1.40:1	1.50:1
1.3 INSERTION LOSS (dB MAX)	0.20	0.30	0.40	0.50
1.4 ISOLATION (dB MIN)	80	75	70	60
1.5 RF POWER (WATTS CW MAX) AT SEA LEVEL, +40°C, LOAD VSWR 1:1	125	90	75	60
1.6 IMPEDANCE (NOMINAL)	50 OHMS			

2.0 ACTUATION DATA:

2.1	NOMINAL VOLTAGE	OPERATING VOLTAGE	CURRENT (NOMINAL) @ NOMINAL VOLTAGE & 25°C
	12	11-14	570mA
	15	13-17	365mA
	24	20-28	225mA
	28	24-32	180mA

2.2 SWITCHING TIME 15mS MAX
 2.3 OPERATING MODE LATCHING SELF CUT-OFF

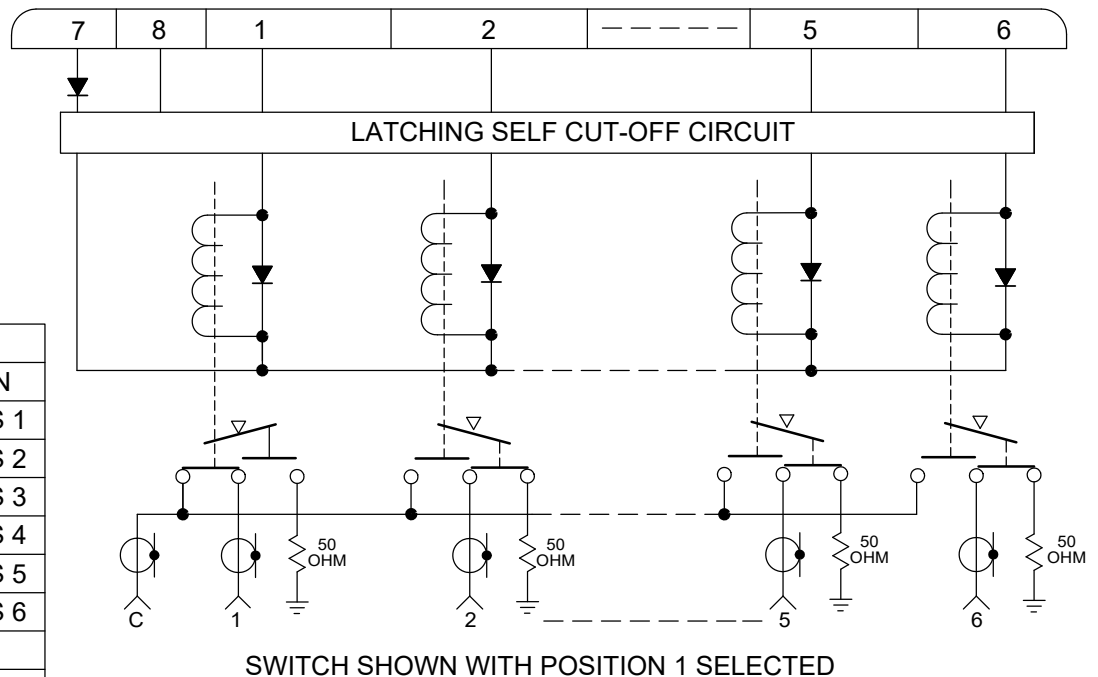
3.0 MECHANICAL:

3.1 CONTACT ARRANGEMENT SP3T, SP4T, SP6T
 3.2 RF CONTACTS BREAK BEFORE MAKE
 3.3 WEIGHT 9.0oz (255g) NOMINAL
 3.4 DESIGN LIFE 1,000,000 CYCLES MINIMUM

4.0 ENVIRONMENTAL:

4.1 OPERATING TEMPERATURE -25°C TO +65°C
 4.2 STORAGE TEMPERATURE -55°C TO +85°C
 4.3 SEAL: SAND AND DUST

SCHMATIC:



DA15P DC CONN	
PIN NO	FUNCTION
1	LOGIC POS 1
2	LOGIC POS 2
3	LOGIC POS 3
4	LOGIC POS 4
5	LOGIC POS 5
6	LOGIC POS 6
7	+VDC
8	-RTN
9-15	NO CONNECT

LOGIC HI "1" (ON) = 2.4 - 5.5 Vdc (1.35mA @ 3.85Vdc)
 LOGIC LO "0" (OFF) = 0.0 - 0.8 Vdc (0mA @ 0Vdc)

CODE IDENT. NO. 00471	DWG. NO. 4X1JL-4X0803A	REV. B
SCALE NONE	SHEET 3 OF 3	