

REVISIONS			
REV.	DESCRIPTION	DATE	APPROVED
A	PRODUCTION RELEASE	3/9/06	J.S.
B	REVISED PER ECO #10618	6/11/13	K.R.

Nominal Coil Voltage	Part Number
12 Vdc	412PST-620132
15 Vdc	412PST-690132
24 Vdc	412PST-680132
28 Vdc	412PST-630132

REVISIONS	B	B	B			
SHEET NO.	1	2	3			
APPROVALS		DATE				
DRAWN S. LEE		2/21/06				
ENGINEERING G. NICKLAUS		2/22/06				
QUALITY R. MATSUMOTO		2/23/06				
MANUFACTURING R. GONZALEZ		2/22/06				



DowKey®
Microwave
CORPORATION

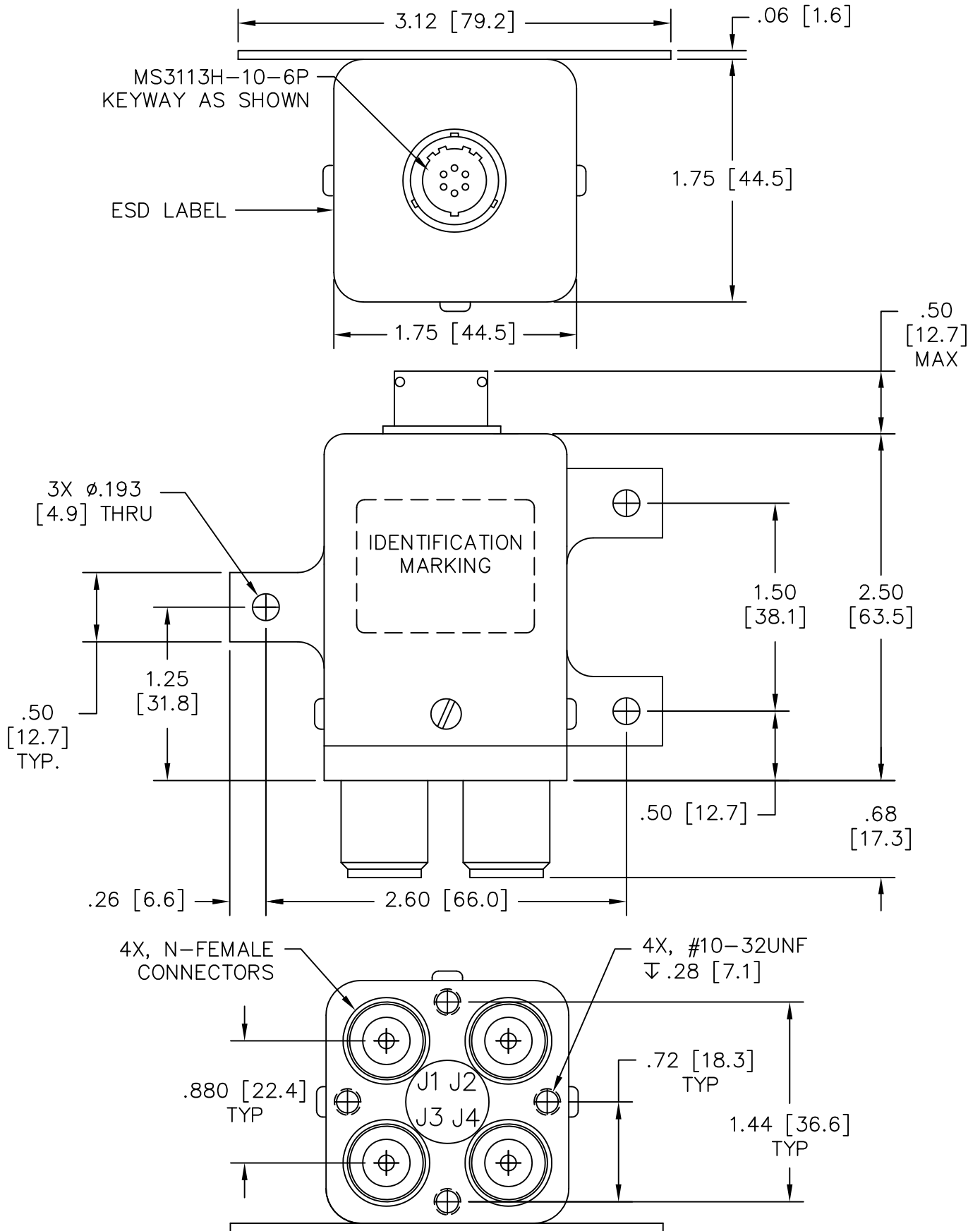
4822 McGrath Street
Ventura, CA. 93003-5641
PH: (805) 650-0260
FAX: (805) 650-1734

A **DOVER** TECHNOLOGIES COMPANY

SWITCH, TRANSFER, FAILSAFE, SUPPRESSION DIODE
N-FEMALE CONNECTORS, MECH. INDICATORS,
MS3113H10-6P CONN., EPOXY SEAL, -55°C TO +85°C

CODE IDENT. NO. 00471	DWG. NO. 412PST-6X0132
SCALE NONE	FINAL ASSY:
SHEET 1 OF 3	

OUTLINE DRAWING:



[] MILLIMETERS

UNLESS OTHERWISE SPECIFIED TOLERANCES ARE: .XXX \pm .010 ANGLES: \pm 3' .XX \pm .030	CODE IDENT. NO. 00471	DWG. NO. 412PST-6X0132	REV. B
	SCALE NONE	SHEET 2 OF 3	

SPECIFICATIONS:

1. RF CHARACTERISTICS:

1.1 FREQUENCY (GHz):	DC-1	1-2	2-4	4-8	8-12.4
1.2 VSWR (RATIO MAX):	1.15:1	1.20:1	1.25:1	1.45:1	1.60:1
1.3 INSERTION LOSS (dB MAX):	0.15	0.20	0.25	0.40	0.60
1.4 ISOLATION (dB MIN):	85	80	70	60	60
1.5 RF POWER (WATTS CW MAX):	500	350	250	150	120

2. ACTUATION DATA:

NOMINAL VOLTAGE	OPERATING VOLTAGE	CURRENT (TYP) @ NOMINAL VOLTAGE & 25°C
12	11-14	300mA
15	13-17	250mA
24	20-28	190mA
28	24-32	175mA

- 2.2 SWITCHING TIME: 20ms MAX
 2.3 OPERATING MODE: FAILSAFE, SUPPRESSION DIODE

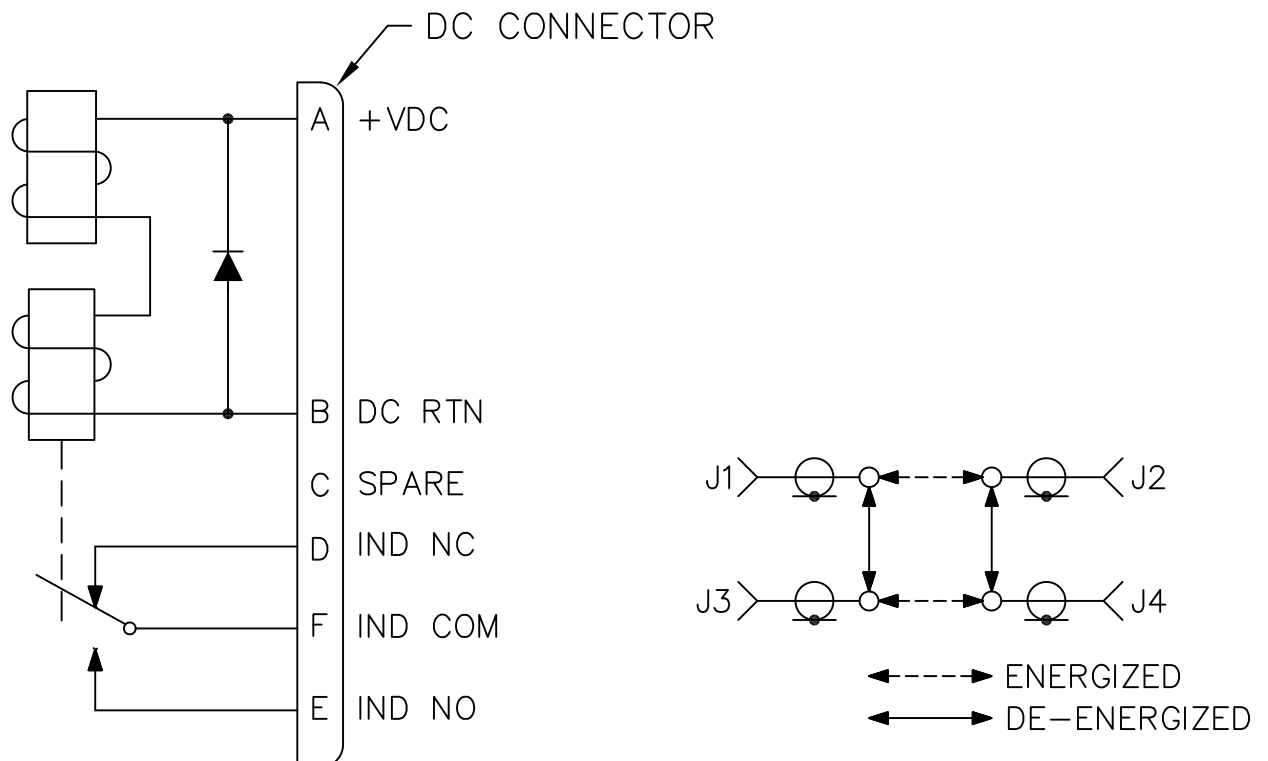
3. MECHANICAL:

- 3.1 RF CONTACTS: BREAK BEFORE MAKE
 3.2 WEIGHT: 10oz. (284g.) NOMINAL
 3.3 DESIGN LIFE: 1,000,000 CYCLES MIN

4. ENVIRONMENTAL:

- 4.1 OPERATING TEMPERATURE: -55°C TO +85°C
 4.2 STORAGE TEMPERATURE: -55°C TO +85°C
 4.3 SEAL: EPOXY

SCHEMATIC:



CODE IDENT. NO. 00471	DWG. NO. 412PST-6X0132	REV. B
SCALE NONE	SHEET 3 OF 3	