
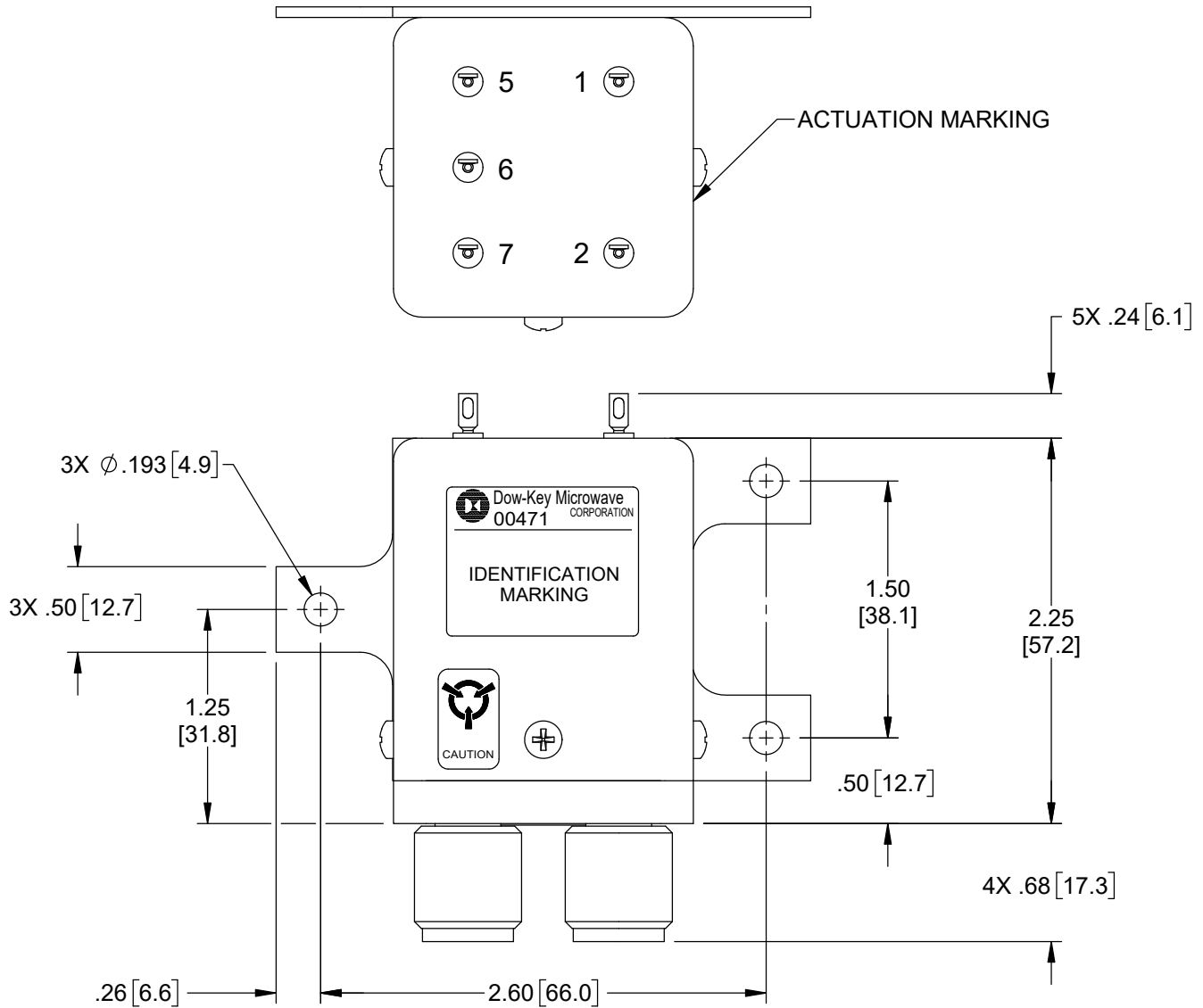


REVISIONS			
REV.	DESCRIPTION	DATE	APPROVED
A	PRODUCTION RELEASE	8/4/98	J.A.
B	REVISED PER ECO 8920	2/26/07	K.R.
C	REVISED PER ECO 12371	2/12/2020	K.P.

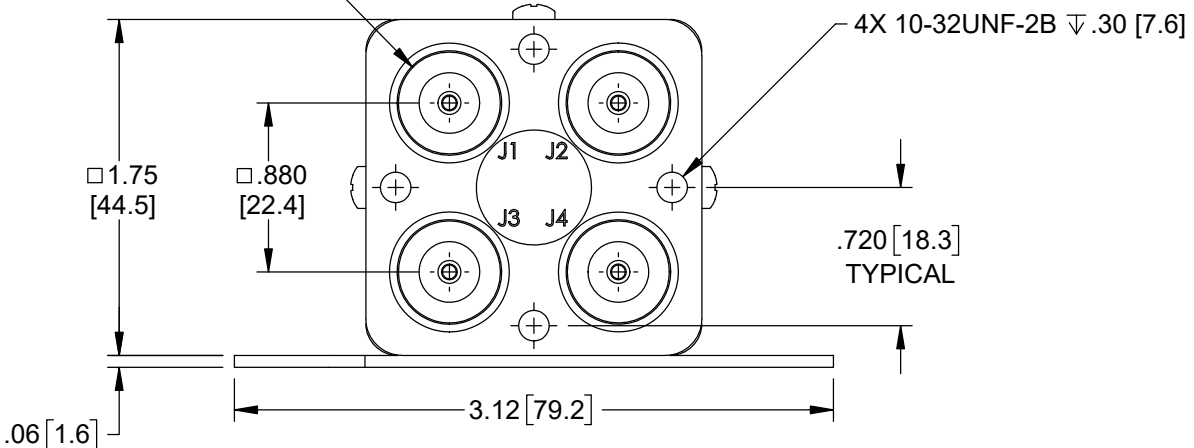
Nominal Coil Voltage	Part Number
12 Vdc	412-620132
15 Vdc	412-690132
24 Vdc	412-680132
28 Vdc	412-630132

APPROVALS	DATE	 DowKey[®] Microwave CORPORATION <small>A DOVER TECHNOLOGIES COMPANY</small>	4822 McGrath Street Ventura, CA. 93003-5641 PH: (805) 650-0260 FAX: (805) 650-1734		
DRAWN S. LEE	02/04/20		SWITCH, TRANSFER, FAILSAFE N-FEMALE CONNECTORS, INDICATORS SUPPRESSION DIODES		
ENGINEERING G. NICKLAUS	2/6/2020				
QUALITY S. RILEY	2/10/2020				
MANUFACTURING R. GONZALEZ	2/11/2020		CODE IDENT. NO. 00471	DWG. NO. 412-6X0132	SCALE NONE

OUTLINE DRAWING:



4X N-FEMALE CONNECTOR



[] MILLIMETERS

UNLESS OTHERWISE SPECIFIED TOLERANCES ARE: .XXX \pm .010 ANGLES: \pm 3° .XX \pm .030	CODE IDENT. NO. 00471	DWG. NO. 412-6X0132	REV. C
	SCALE NONE	SHEET 2 OF 3	

SPECIFICATION:

1.0 RF CHARACTERISTICS:

1.1 FREQUENCY (GHz)	DC - 1	1 - 2	2 - 4	4 - 8	8 - 12.4
1.2 VSWR (RATIO MAX)	1.15:1	1.20:1	1.25:1	1.45:1	1.60:1
1.3 INSERTION LOSS (dB MAX)	0.15	0.20	0.25	0.40	0.60
1.4 ISOLATION (dB MIN)	85	80	70	60	60
1.5 RF POWER (WATTS CW MAX) AT SEA LEVEL, +40°C, LOAD VSWR 1:1	600	400	300	225	175
1.6 IMPEDANCE (NOMINAL)	50 OHMS				

2.0 ACTUATION DATA:

2.1	NOMINAL VOLTAGE	OPERATING VOLTAGE	CURRENT (NOMINAL) @ NOMINAL VOLTAGE & 25°C
	12	11-14	300mA
	15	13-17	250mA
	24	20-28	225mA
	28	24-32	175mA

2.2 SWITCHING TIME 15mS MAX
 2.3 OPERATING MODE PULSE LATCHING

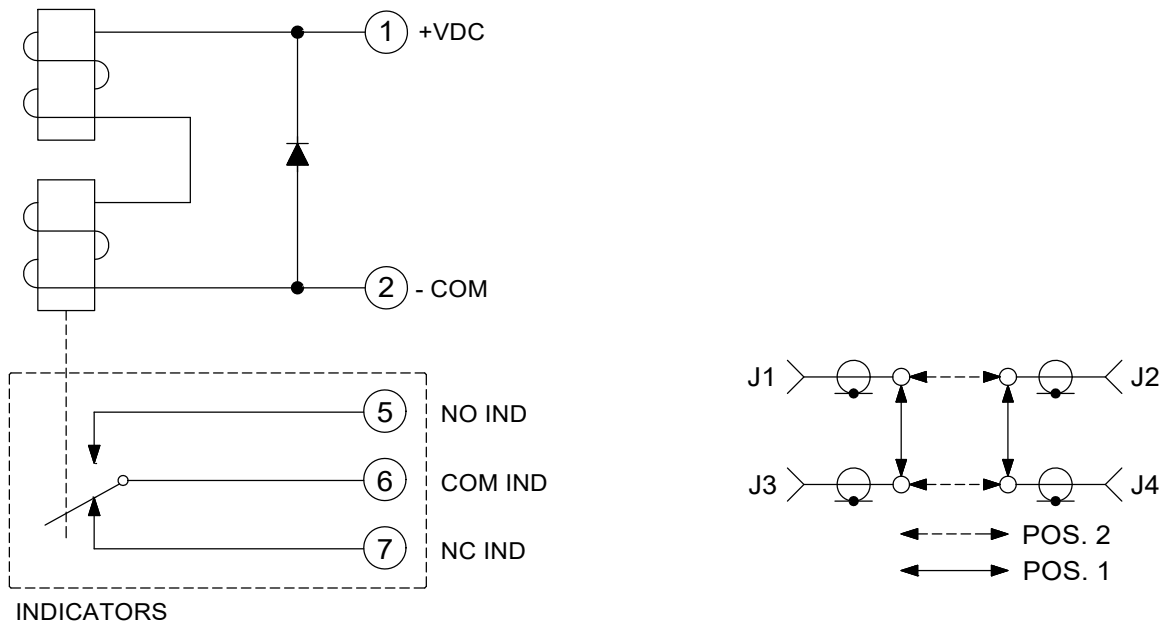
3.0 MECHANICAL:

3.1 CONTACT ARRANGEMENT TRANSFER
 3.2 RF CONTACTS BREAK BEFORE MAKE
 3.3 WEIGHT 10oz (284g) NOMINAL
 3.4 DESIGN LIFE 1,000,000 CYCLES MINIMUM

4.0 ENVIRONMENTAL:

4.1 OPERATING TEMPERATURE -25°C TO +65°C
 4.2 STORAGE TEMPERATURE -55°C TO +85°C
 4.3 SEAL: SAND AND DUST

SCHMATIC:



CODE IDENT. NO. 00471	DWG. NO. 412-6X0132	REV. C
SCALE NONE	SHEET 3 OF 3	