

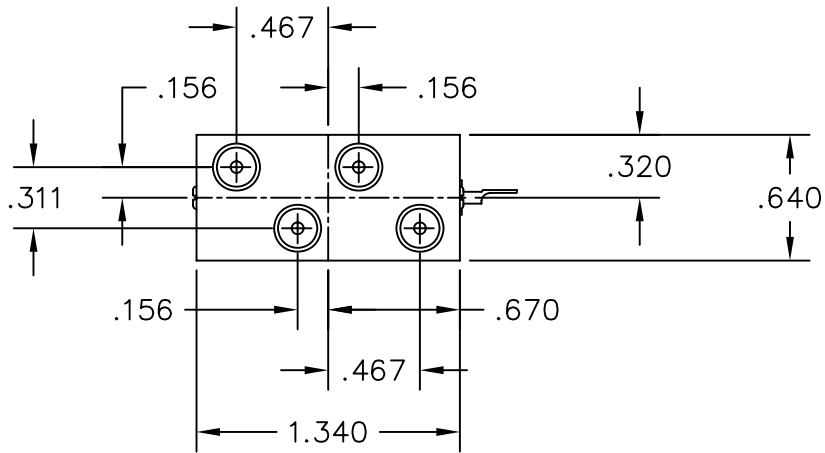
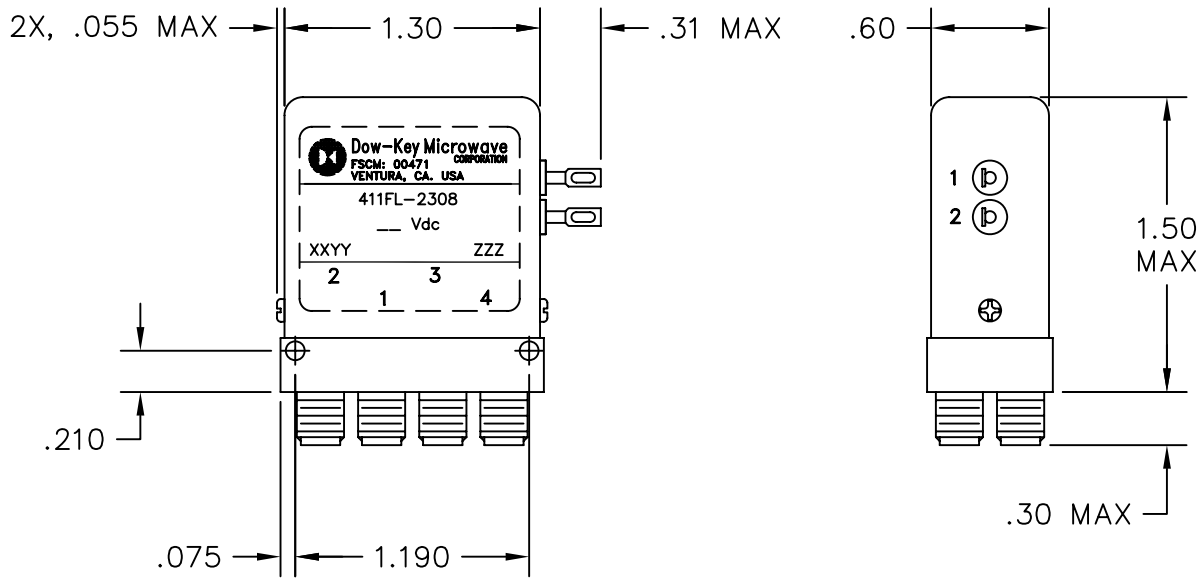


REVISIONS			
REV.	DESCRIPTION	DATE	APPROVED
A	PRODUCTION RELEASE	3/30/06	J.S.
B	REVISED PER ECO #8824	11/28/06	K.R.

Nominal Coil Voltage	Part Number
15 Vdc	411FL-2908
28 Vdc	411FL-2308

REVISIONS	B	B	B				 DowKey[®] Microwave CORPORATION	4822 McGrath Street Ventura, CA. 93003-5641 PH: (805) 650-0260 FAX: (805) 650-1734
SHEET NO.	1	2	3					
APPROVALS		DATE						SWITCH, TRANSFER, FAILSAFE, SMA-FEMALE CONNECTORS BYPASS (1-3)
DRAWN	S. LEE	2/8/06						
ENG	G. NICKLAUS	2/8/06						
ENG. MGR.	R. SZNUK	2/8/06						
SALES MGR.	V. HARTER	2/20/06						
Q.A. MGR.	R. MATSUMOTO	2/9/06					CODE IDENT. NO.	DWG. NO.
MFG. MGR.	R. GONZALEZ	2/9/06					00471	411FL-2X08
SCALE		NONE		FINAL ASSY:			SHEET 1 OF 3	

OUTLINE DRAWING:



[] MILLIMETERS

UNLESS OTHERWISE SPECIFIED TOLERANCES ARE: .XXX ±.010 ANGLES: ±3' .XX ±.030	CODE IDENT. NO. 00471	DWG. NO. 411FL-2X08	REV. B
	SCALE NONE	SHEET 2 OF 3	

SPECIFICATIONS:

1. RF CHARACTERISTICS:

1.1 FREQUENCY (GHz):	DC-1	1-2	2-3	3-4
1.2 VSWR (RATIO MAX):	1.10:1	1.15:1	1.20:1	1.25:1
1.3 INSERTION LOSS (dB MAX):	0.10	0.15	0.20	0.25
1.4 ISOLATION (dB MIN):	80	80	80	80
1.5 RF POWER (WATTS CW MAX):	100	100	100	100

2. ACTUATION DATA:

2.1	NOMINAL VOLTAGE	OPERATING VOLTAGE	CURRENT (TYP) @ NOMINAL VOLTAGE & 25°C
	15	13-17	430mA
	28	24-32	220mA

2.2 SWITCHING TIME: 15ms MAX

2.3 OPERATING MODE: FAILSAFE

3. MECHANICAL:

3.1 RF CONTACTS:	BREAK BEFORE MAKE
3.2 WEIGHT:	1.6oz. (45.4g.) NOMINAL
3.3 DESIGN LIFE:	2,000,000 CYCLES MIN

4. ENVIRONMENTAL:

4.1 OPERATING TEMPERATURE:	-25°C TO +65°C
4.2 STORAGE TEMPERATURE:	-55°C TO +85°C
4.3 SEAL:	SAND AND DUST

SCHEMATIC:

↔ DE-ENERGIZED

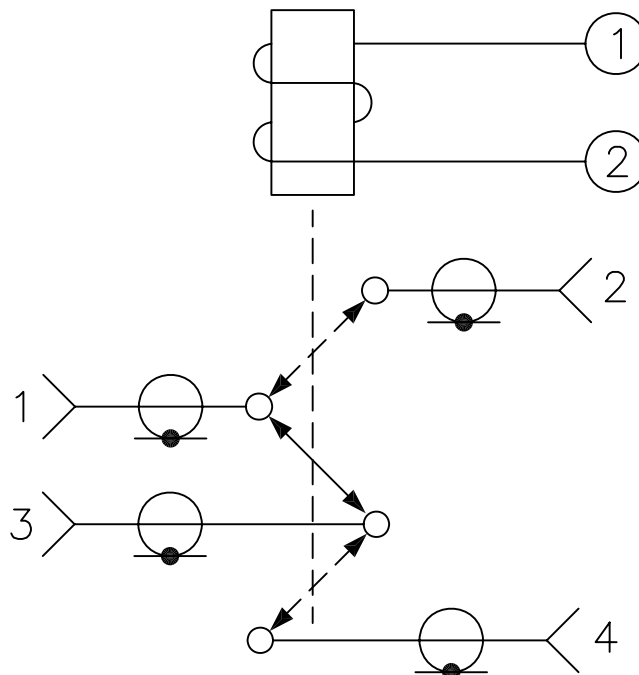
↔- - -↔ ENERGIZED

DE-ENERGIZED

1-2, 3-4 (OPEN),
1-3 (CLOSED),

ENERGIZED

1-2, 3-4 (CLOSED),
1-3 (OPEN),



SCHEMATIC SHOWN IN DE-ENERGIZED POSITION

CODE IDENT. NO. 00471	DWG. NO. 411FL-2X08	REV. B
SCALE NONE	SHEET 3 OF 3	